

# SENNA

@ Precinct 12

PUTRAJAYA

3-STOREY SEMI-DETACHED HOMES  
40' x 80'

*Especially for You*

# Simple Perfection

YOUR HOME SWEET HOME



# Lusciously Green

INDULGE IN THE PEACEFUL SURROUNDINGS

Extend your lifestyle outdoors at Senna. Nestled amidst landscaped splendour, a walkway garden in your backyard transforms into a flourishing nook, offering a tranquil green space for your family.



Artist impression



# Stylishly Modern

REDISCOVER YOUR TRUE SELF

Enjoy quality time with loved ones at home. An open plan layout for the living and dining areas offers ample space for you and your family.



Artist impression ~  
Living and dining



# Elegant Grandeur

FIND YOUR PEACE-OF-MIND

A high glass sliding door at the master bedroom opens up the space while optimising natural lighting. The master bedroom has an en-suite bathroom that comes complete with a bathtub and double vanities, allowing you to personalise your space for a smoother daily routine.



Artist impression ~  
Master bedroom

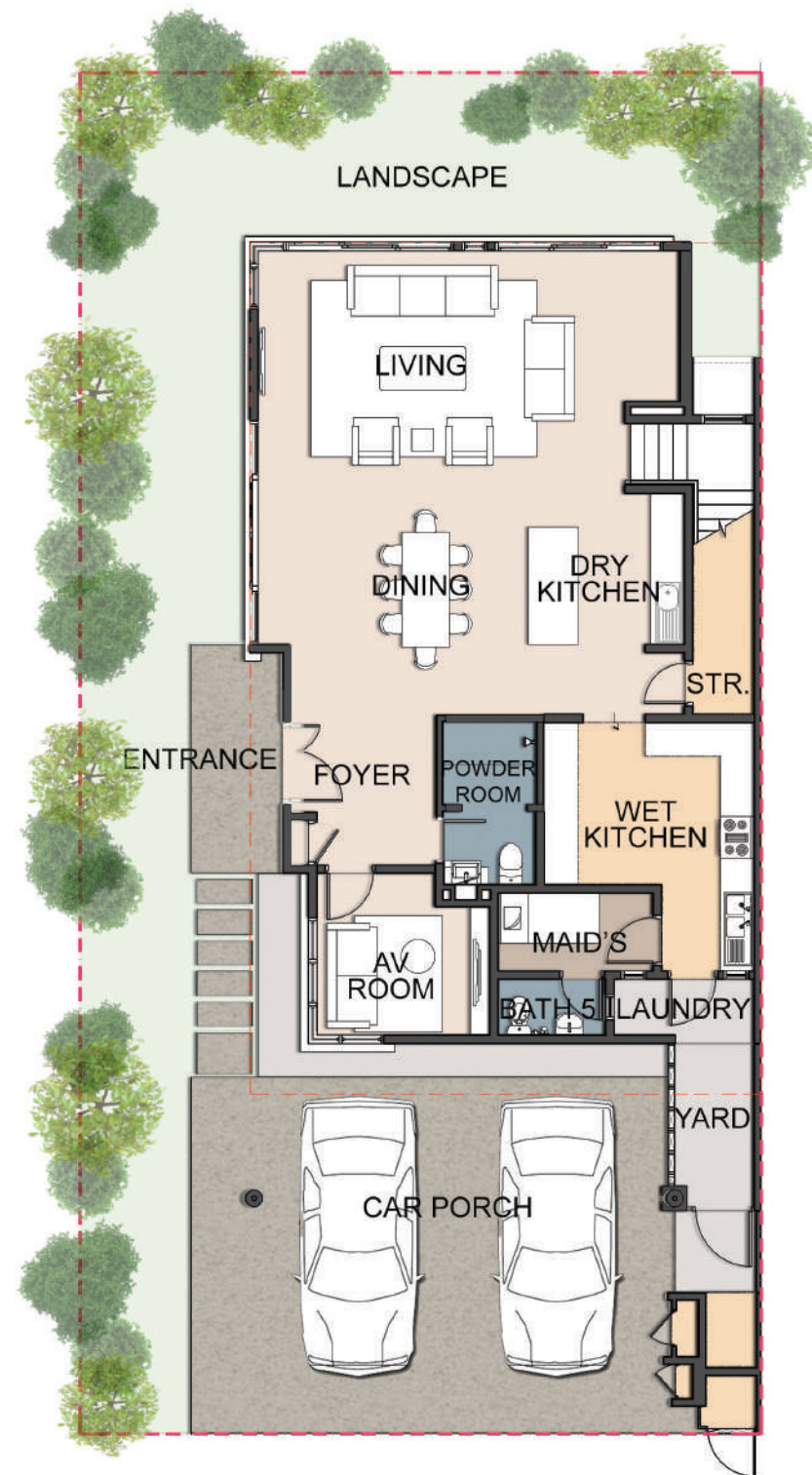




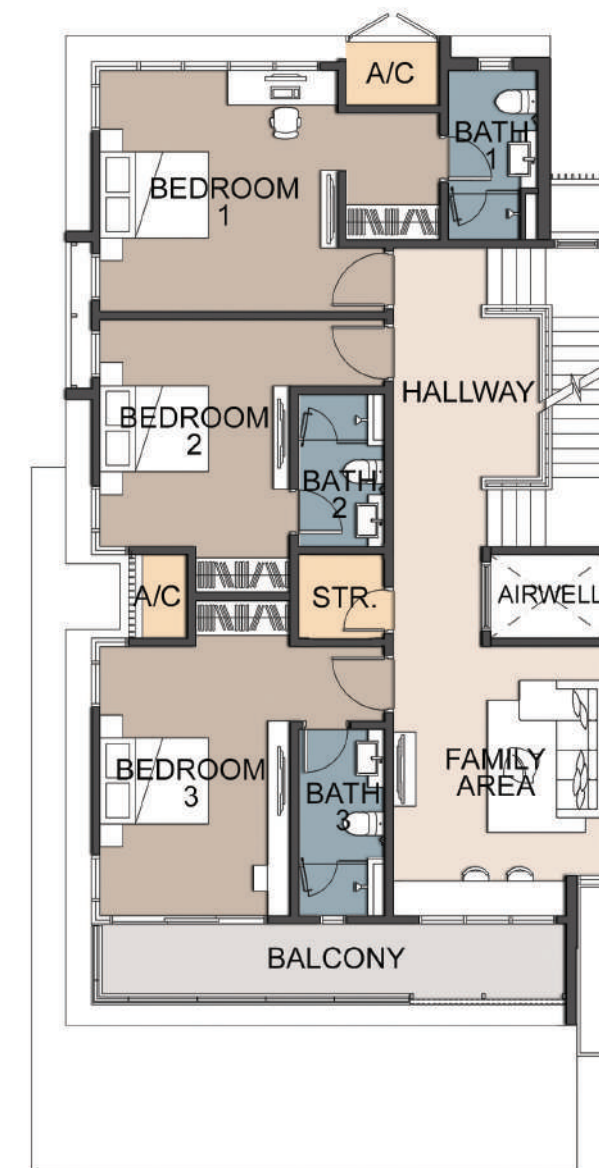
Artist impression

# Type AA1

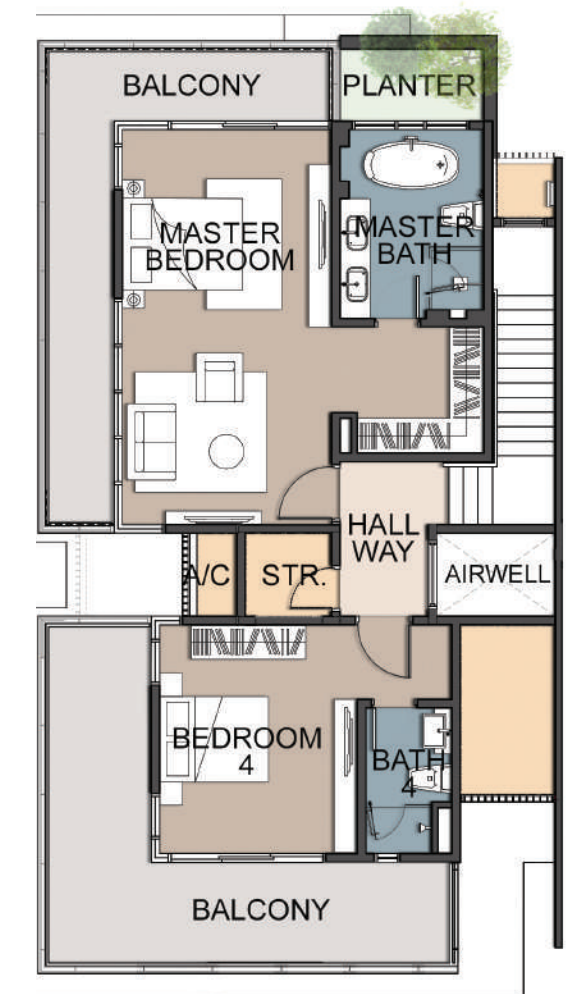
- Land area: 3,197 sf - 4,672 sf
- Built-up: 4,024 sf
- 6+1 bedrooms with attached bathrooms
- Total units: 28



Ground Floor



1st Floor

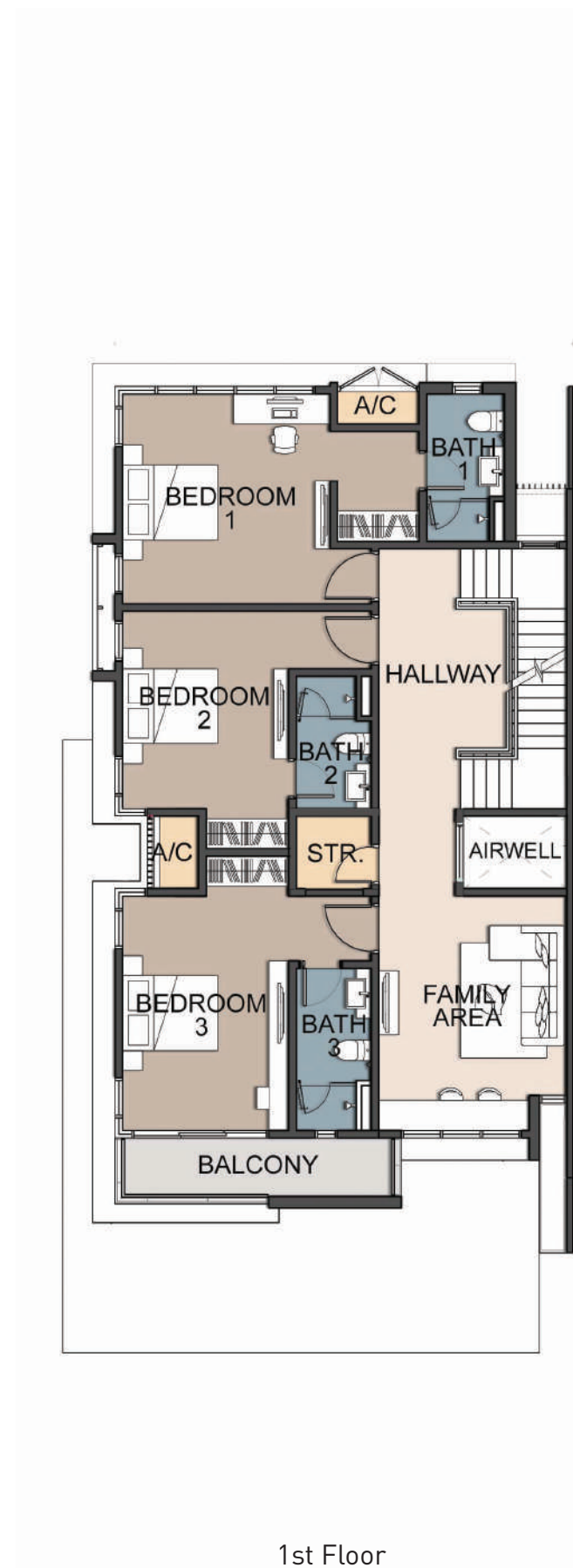


2nd Floor

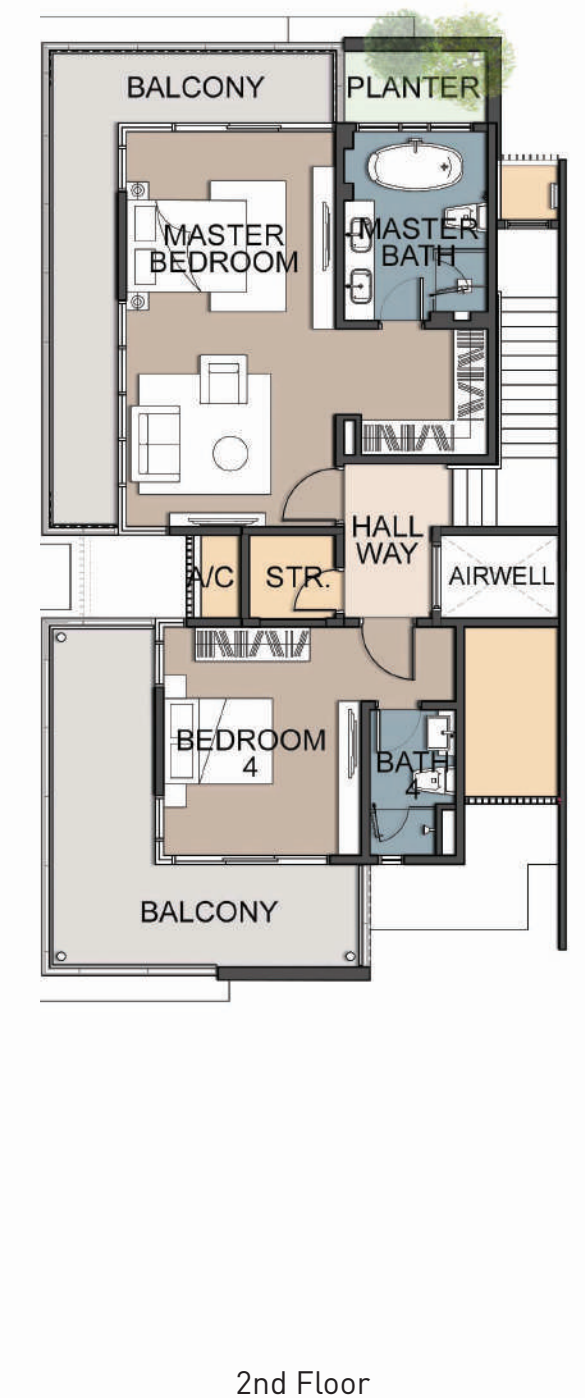
# Type AA2



Ground Floor



1st Floor



2nd Floor

- Land area: 3,197 sf - 5,393 sf
- Built-up: 3,989 sf
- 6+1 bedrooms with attached bathrooms
- Total units: 26

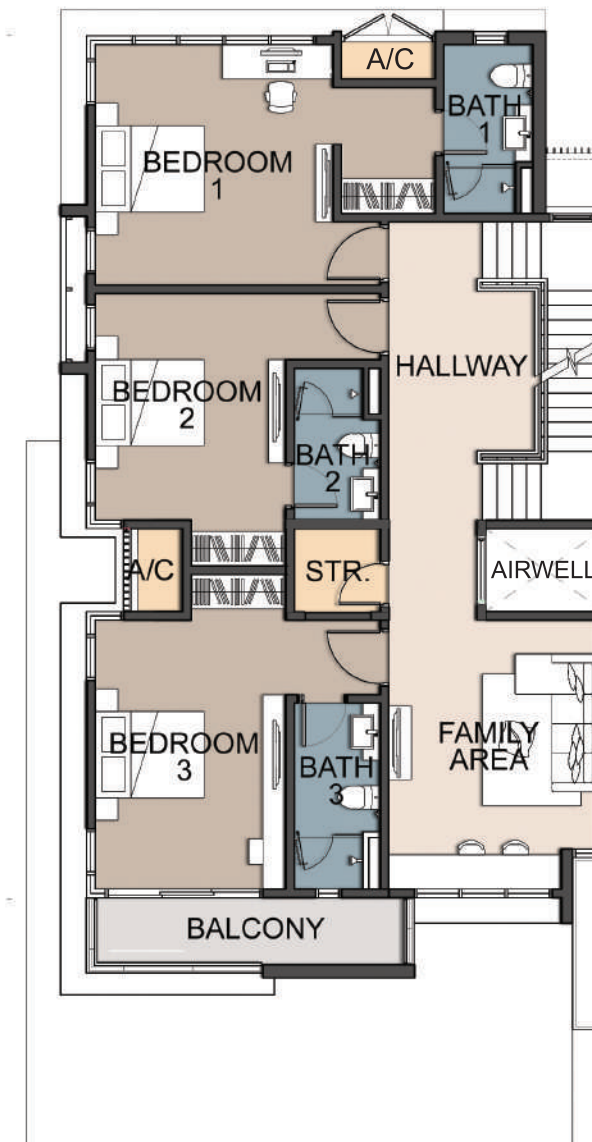


# Type AA3

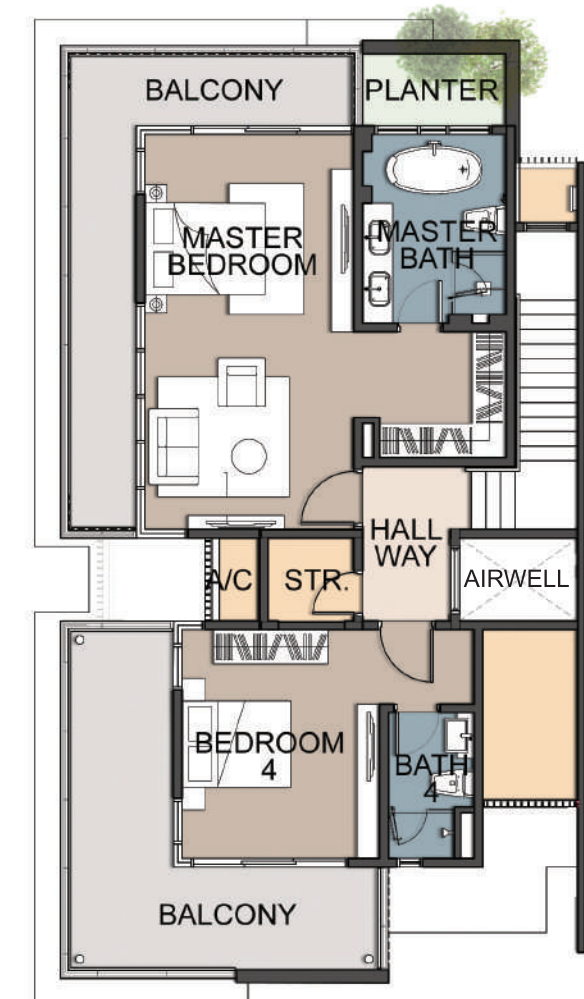
- Land area: 6,071 sf - 6,706 sf
- Built-up: 4,308 sf
- 6+1 bedrooms with attached bathrooms
- Total units: 2



Ground Floor



1st Floor



2nd Floor

# Specifications

## TYPES AA1, AA2 AND AA3

Structure	Reinforced Concrete
Wall	Brick Wall
Roof Covering	Metal Deck
Ceiling	Skimcoat/Plaster Ceiling
Window	Aluminum Frame Glass Window
Door	Flush Door, Timber Louvres Door, Aluminum Frame Glass Sliding Door
Ironmongery	Quality Lock Sets

### GROUND FLOOR

Porch  
Living, Dining, A/V Room  
Dry Kitchen / Yard  
Wet Kitchen  
Store  
Utility / Laundry  
Powder Room  
Bath 4

### FLOOR FINISHES

Tiles  
Tiles  
Tiles  
Tiles  
Cement Render  
Tiles  
Tiles  
Tiles

### WALL FINISHES

Plaster & Paint  
Plaster & Paint  
Plaster & Paint  
Tiles  
Plaster & Paint  
Plaster & Paint  
Tiles  
Tiles

### FIRST FLOOR

Bedroom 1, 2, 3  
Bath 1, 2, 3  
Hallway, Family Lounge

### FLOOR FINISHES

Engineered Timber  
Tiles  
Engineered Timber

### WALL FINISHES

Plaster & Paint  
Tiles  
Plaster & Paint

### SECOND FLOOR

Master Bedroom,  
Guest Room, Hallway  
Master Bath, Guest Bath  
Balcony

### FLOOR FINISHES

Engineered Timber  
Tiles  
Tiles

### WALL FINISHES

Plaster & Paint  
Tiles  
Plaster & Paint

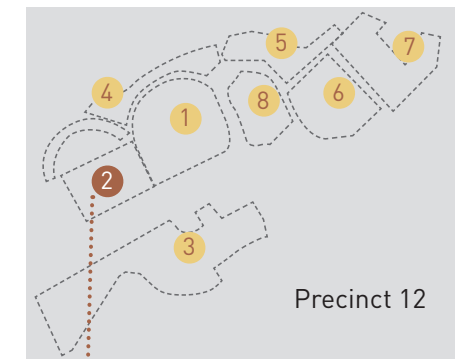
### SANITARY & PLUMBING FITTINGS

Wash Basin (WB)	8
Water Closet (WC)	7
Kitchen Sink	2
Shower	6
Bath Tub	1

### ELECTRICAL FITTINGS

TYPE	AA1 & AA2	AA3
Lighting Point	51	54
Ceiling Fan Point	11	12
Air-conditioning Point	8	9
Water Heater Point	1	1
13A Switch Socket Outlet	32	33
15A Switch Socket Outlet	1	1
Outdoor Switch Socket Outlet (Filter)	1	1
Telephone Outlet	3	3
TV Outlet	3	3
Shaver Point	1	1

# Site Plan



### LEGEND

	TYPE AA1	TYPE AA2	TYPE AA3
Intermediate	24 units	16 units	
End		8 units	
Corner	4 units	2 units	2 units*

\* Special Corner

# Premier Address

FOR A PERFECT LIFESTYLE

Enjoy the luxury of picturesque surroundings, dynamic urban conveniences and vibrant events and activities all within one ideal venue in Putrajaya.



# PUTRAJAYA Awaits You



Nadi 15 @ Precinct 15



Alamanda Shopping Centre @ Precinct 1

## RETAIL & COMMERCIAL

With Alamanda Shopping Centre located just 6km away and the Nadi 15 commercial hub nearby, you'll have an array of renowned stores featuring popular brand names as well as banks at your fingertips.

## DINING

Around 8km away is Ayer@8, a waterfront promenade featuring an array of F&B outlets. There are also a vast variety of eateries to choose from throughout Putrajaya. From fine-dining restaurants to fast food establishments and everything in between, there's something to cater to every taste bud.



Ayer@8 Putrajaya @ Precinct 8



Putra Mosque & Prime Minister's Office @ Precinct 1

## EDUCATION

An exceptional learning experience awaits with 20 public schools, international schools like Nexus International School at Precinct 15 as well as globally acclaimed institutes of higher learning like Heriot-Watt University Malaysia at Precinct 5 within the vicinity.



Heriot-Watt University Malaysia @ Precinct 5



Nexus International School @ Precinct 15

## PRIME MINISTER'S OFFICE & MINISTRIES

As the seat of the federal government, Putrajaya is home to most of the country's major ministries, including the imposing Perdana Putra, where the Prime Minister's office is located.

## LANDMARKS

Iconic architectural structures offer a picture-perfect backdrop that has made this modern city one of the most recognisable in the world.



Menara PjH & Seri Wawasan Bridge @ Precinct 2



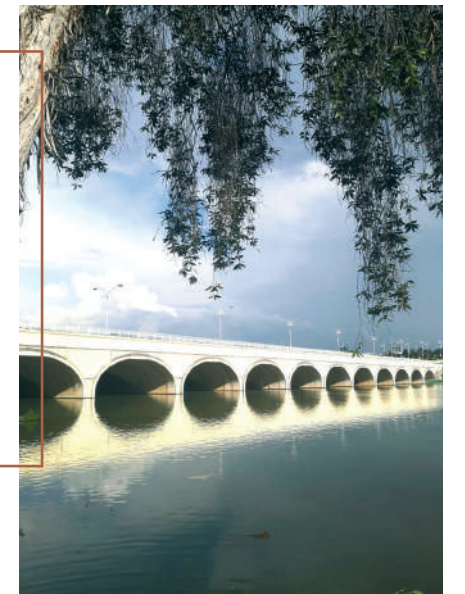
Urban cityscape in Putrajaya at dusk



Taman Saujana Hijau @ Precinct 11

## NATURE'S BOUNTY

13 beautiful green parks and water features, including the unique Taman Wetlands, Taman Rimba Alam and Putrajaya Lake, offer plenty of opportunities for enjoying the great outdoors whilst bringing a myriad of majestic flora and fauna closer to you.



Taman Wetlands @ Precinct 12



Taman Ekuestrian @ Precinct 5

## AMAZING ACTIVITIES

The city is replete with modern sports & recreational facilities like Putrajaya Challenge Park, Taman Ekuestrian and an Olympic-sized swimming pool as well as Instagram-worthy pit stops, making it a thriving hotspot of activities.



Putrajaya Challenge Park @ Precinct 5

## HOTELS

Brimming full of warm hospitality, the city has a wide array of hotels, such as The Everly Putrajaya and DoubleTree by Hilton Putrajaya Lakeside, waiting to serve and pamper every guest.



DoubleTree by Hilton Putrajaya Lakeside @ Precinct 5



# Hallmark of

## DISTINGUISHED EXCELLENCE

*Putrajaya Holdings Sdn. Bhd. is the master developer of Malaysia's administrative capital of Putrajaya, the largest urban development project in the country.*

*Incorporated in 1995, Putrajaya Holdings is a subsidiary of KLCC (Holdings) Sdn Bhd, the master developer of the 100-acre Kuala Lumpur City Centre (KLCC) Development.*

*The winner of many prestigious sustainability awards and other cityscape awards, Putrajaya Holdings is renowned for its exemplary projects that exude modern charm, sophisticated architecture, innovation and sustainability.*

## WHY PUTRAJAYA HOMES?



Freehold  
Premier  
Address



Safe  
Community  
Living



Excellent  
Connectivity



World-Class  
Infrastructure



Clean, Green &  
Recreational  
City

Marketing Suite, Menara PjH  
No. 2 Jalan Tun Abdul Razak, Precinct 2  
62100 PUTRAJAYA.  
Weekdays 8.30am – 5pm & Weekends 10.30am – 4pm  
Tel: 03 8888 6633

[www.pjhsalesvirtual.com](http://www.pjhsalesvirtual.com)



**PUTRAJAYA HOLDINGS**

All drawings & illustrations contained herein are artists' impressions only. All plans & specifications are subject to changes by the relevant authorities and/or the developer's architect.